



**Torque:** 88.5 in-lb ~ 26,552 in-lb (10N.m ~ 3000N.m)  
**Voltage:** 24VDC/AC, 110VAC, 220VAC, 380VAC, 440VAC  
**Duty Cycle:** Continuous running duty type (IEC 60034-1) 51 100%  
**Environment Temperature:** -40°F ~ 140°F (-40°C ~ 60°C)  
**Surface Temperature:** ≤ 185°F (85°C)  
**Humidity:** ≤ 95% (122°F)  
**IP Grade:** IP67, Customized IP68  
**Corrosion-Proof:** Standard C3-02 (ISO 12944), optional for C3~C5.  
**Service life 5-15 years in ocean areas.**  
**Service Life:** 100,000 cycles (1 cycle = 0° → 90° → 0°)

## EXC Series

The EXC Series is an explosion-proof electric actuator equipped with a fail-safe function. It can be used safely in hazardous areas within the scope of certification. This series is energy-saving and safe for production.

### Local Operation Panel

Optional for open, close, and valve position adjustment.

### Supercapacitor

- Safe reset at Open, Close, Retain, User-defined position.
- Approved by CSA Group for 100,000 cycles (90° stroke) supercapacitor life test.

### Operation Panel

Multiple functions can be set through the panel, such as:

- Calibrate open position, close position, and middle position.
- Local mode and Stop.

### Analog Signal (For Modulating Type Only)

- Input: 4-20mA, 1-5V, 2-10V
- Output: 4-20mA, 1-5V, 2-10V

### Starts (For Modulating Type Only)

- EXC100(315) and below sizes: 5 million starts, 2400 starts max/hour
- EXC200(415)-EXC3000 sizes: 2 million starts, 1800 starts max/hour

### Vibration-Proof Performance

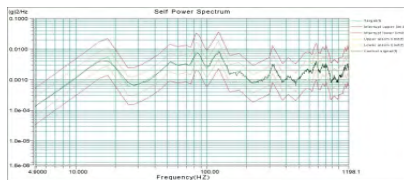
- Train Vibration: Frequency 5-1200Hz, Acceleration 1.5g, Time 4H
- Road Bumps: Frequency 5-100Hz, Acceleration 10g, Time 0.5H
- Earthquake: Acceleration 10g, 13ms duration, 125 shocks in both directions

### Certifications and Ratings

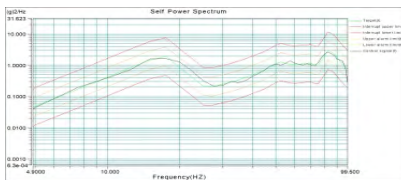
- High-frequency random vibration
- Low-frequency random vibration
- Earthquake Vibration
- CSA, RoHS, ATEX, IECEx (Zone 1, Zone 21, DIVISION CI, CII, CIII)
- SIL3, IP68

## Product Data

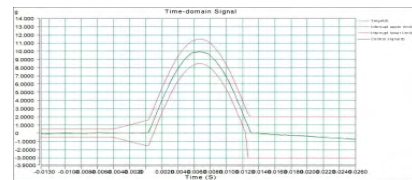
Model	Torque		Operation time(S) / stroke 90°				
	N·m	in-lb	24VAC/24VDC	110VAC	220VAC	380VAC	440VAC
EXC50P1	40	354	11	8			
EXC50P2	60	531	14	12			
EXC100P1	80	708	20	16			
EXC100P2	100	885	27	18			
EXC200P1	150	1328	10				
EXC200P2	200	1770	14				
EXC200P3	250	2213	16				
EXC200P4	300	2655	15				
EXC200P5	400	3540	19				
EXC500P3	500	4425	24				
EXC500P4	650	5753	30				
EXC500P5	800	7080	36				
EXC500P6	1000	8850	38				
EXC500P7	1200	10620	45				
EXC2000P2	1600	14160	74				
EXC2000P3	2000	17700	85				
EXC3000P1	2500	22125	111				
EXC3000P2	3000	26550	128				
EXC215	23	204	5				
EXC315	50	443	5				
EXC415	80	708	5				
EXC425	120	1062	5				
EXC435	150	1328	5				
EXC445	200	1770	5				
EXC455	300	2655	5				
EXC465	400	3540	5				
EXC51A	500	4425	7.5				
EXC52A	650	5753	7.5				
EXC53A	800	7080	15				
EXC54A	1000	8850	15				



High frequency random vibration



Low frequency random vibration



Earthquake Vibration